

Official Dedication Program

for the 46 miles of WISCONSIN'S

INTERSTATE ROUTES 90—94, 90 and 94

Between ROCKY ARBOR and TOMAH
in JUNEAU and MONROE COUNTIES

Wednesday, October 14, 1964



Twin bridges carry Interstate 90-94 from south to north over U.S. Highway 12-16 in the Rocky Arbor area northwest of Wisconsin Dells. Temporary tie-off at left will be abandoned after linking these routes together since October, 1961. A traffic interchange scheduled for construction at this site in early 1965.

Greetings from Governor Reynolds

The State of Wisconsin can be justly proud today on the occasion of the opening of this great new section of the National System of Interstate and Defense Highways. An accomplishment of this magnitude can only be realized through the continuing cooperation and good will of federal, state, county and local officials and citizens.



This section of Interstate 90-94 that we dedicate today will be of the utmost importance in the continued growth and forward progress of the great central area of Wisconsin which it serves. The new highway not only brings this area into closer contact with the Midwestern heartlands, but also brings the entire nation to our doorsteps. This means new opportunities for the development of agriculture, business, industry and recreation.

Central area farm produce and manufactured goods can now be moved more easily and quickly to the nation's marketplace. Visitors from the Greater Chicago-land area and more distant points can now travel with greater comfort and speed to our vacation and recreation areas. The new route will provide important travel-time savings and easier motoring, with fewer accidents and more lives saved.

It is a real pleasure for me to join with you on this occasion of celebration, and to share with each of you in the pride of accomplishment justified by the new highway facility.

John W. Reynolds
Governor of Wisconsin

A Message from Your State Highway Commission

The 46 miles of Interstate Routes 90-94, 90 and 94 that we dedicate today are indicative of the steady progress being made toward the completion ahead-of-schedule of Wisconsin's portion of this national highway system. The Rocky Arbor-Tomah section brings the state's record to 285 completed miles of Interstate free-ways, or about 62 percent of the total 458 miles allocated to Wisconsin by Congress in the enabling legislation of 1956 and approved by the U.S. Bureau of Public Roads.

It is a function of your State Highway Commission to utilize all available highway user funds for the continuing development of a safe, adequate network of highways to reach and serve all areas of the state. This requires the most careful programming of your highway dollars to assure the earliest completion of Wisconsin's Interstate routes and concurrent development of the existing State Trunk Highway System to provide safe, adequate service for growing traffic needs.

We commend your attention to the careful engineering, quality workmanship and functional beauty of the highway being dedicated today. This section of Interstate should easily be recognized as one of the most scenic routes in the nation, blending as it does into this beautiful bluff-and-plain area of central Wisconsin.

We sincerely appreciate the cooperation of county and local officials and citizens in making this project possible, and we are pleased to join with you today in observing this historic event.

G. H. BAKKE
Vice Chairman

V. L. FIEDLER
Secretary

HARVEY GRASSE
Chairman



Opening Program and Day's Agenda

10:30 A.M. Wednesday, October 14, 1964

Atop the Twin Bridges carrying I-Route 90-94
over U.S. 12-16 at Rocky Arbor in Juneau County

Master of Ceremonies: HARVEY GRASSE, Chairman
State Highway Commission of Wisconsin

- ON, WISCONSIN! and OUR NATIONAL ANTHEM - Wisconsin Dells High School Band
- PRESENTATION OF COLORS - Harold B. Larkin Post No. 187
American Legion, Wisconsin Dells
- INVOCATION - Rev. J. L. Raney, Indian Baptist Church
- GREETINGS - Mr. Grasse
- INTRODUCTION OF GUESTS
- WELCOME TO ROCKY ARBOR AREA, AND RESPONSE
- REMARKS by T. Lawrence Jones, Washington, D.C., Deputy Federal Highway Administrator
- ADDRESS by Gov. John W. Reynolds
- THE RIBBON CUTTING CEREMONY - Time for Photographs
- MUSICAL SELECTIONS BY THE BAND
- MOTORCADE forms and proceeds on westbound I-90-94 for similar ceremonies at interchanges or sites as follows: County Highway HH, Lyndon Station... Highway 82, Mauston... Highway 80, New Lisbon... County Highway C, Camp Douglas - Camp Williams - Volk Field... the Juneau-Monroe county line... County Highway PP, Oakdale... where the "Y" divides, Tomah... Highway 21, Wyeville-Camp McCoy.

Dedication programs will be presented by officials and citizens of the above named communities together with the area communities of Wisconsin Dells, Elroy, Union Center, Necedah, Hustler, Kendall, Wilton, Norwalk, Sparta and Black River Falls... and the nearby towns of Lyndon, Seven Mile Creek, Kildare, Wonewoc, Summit, Plymouth, Lindina, Lemonweir, Marion, Fountain, Lisbon, Germantown, Orange, Clearfield, Cutler, Necedah, Clifton, Oakdale, Byron, Wilton, Tomah, La Grange, Ridgeville, Adrian and Greenfield... and the Castle Rock-Pentwell Flowage areas... all in Juneau and Monroe counties.



County Trunk Highway "HH" overpasses I-90-94 at interchange serving Lyndon Station, in background.



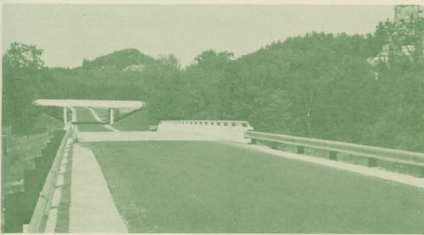
Twin bridges carry I-90-94 over Highway 82 at interchange serving Mauston, in background.



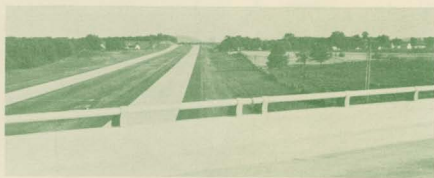
Highway 80 overpasses I-90-94 at interchange between Necedah and New Lisbon, just out of sight beyond curve.



I-90-94 sweeps over County Trunk Highway "C" at interchange serving Camp Douglas, at left, and Camp Williams, at right.



Novel highway design carries town road over eastbound I-90-94 and under westbound roadway near scenic Mill Bluff Roadside Park.



Highway 21 structure, foreground, overpasses I-94 at Wyeville-Camp McCoy interchange. The "Camel's Hump" bluff near the I-90-94 Tomah interchange is visible in background, beyond the Interstate roadways.

PRIME CONTRACTORS FOR THE ROCKY ARBOR-TOMAH Section of Interstate 90-94, 90 and 94

L. G. Arnold, Inc., Eau Claire
 Century Fence Company, Waukesha
 H. S. Dresser & Son, Winona, Minn.
 Duffek Sand & Gravel, Inc., Antigo
 Faherty Drilling Co., Platteville
 Farmer Bros., Inc., Tomah
 Fosco Fabricators, Inc., Dixon, Ill.
 D. L. Gasser Co., Inc. &
 D. L. Gasser, Lake Delton
 Gerke Construction, Inc., Merrill
 Hammersley Construction Co., Inc., Madison
 Hames Nursery Landscape Contractors,
 Inc., Madison
 Harrison Engineering & Construction Corp.,
 Kansas City, Mo.
 Hedrich Construction Co., Inc., Chilton

Hoffman Construction Co., Black River Falls
 P. C. Kaiser Construction, Inc., Portage
 Edward Kraemer & Sons, Inc., Plain
 Koshak Construction Co., Inc., Park Falls
 Mashuda & Stollfus, Princeton
 Mathy Construction Company, La Crosse
 F. F. Mengel Company, Wisconsin Rapids
 Nelson Construction Co., Black River Falls
 Arthur Overgaard, Inc., Elroy
 Pagel Construction Co., Inc., Almond
 Pertzsch Construction Co., Inc., Onalaska
 Raemisch Construction Co., Middleton
 Wausau Construction Co., Wausau
 Zachek Construction Co., Denmark

INFORMATION ABOUT ROCKY ARBOR-TOMAH and the National System of Interstate & Defense Highways

The new section of Wisconsin Interstate provides motorists with 142 miles of continuous freeway facility between the Illinois state line and the Tomah interchange, plus an additional mile on I-90 to a temporary tie-off at U.S. 12-16 east of Tomah, or an additional four miles on I-94 to a temporary tie-off at U.S. 12 north of Tomah.

This Wisconsin freeway connects at the state line with the 76-mile Illinois Interstate 90 (Northwest Tollway) from Chicago, and hence to other Midwestern areas and to the Eastern Seaboard.

Wisconsin's Interstate 94 proceeds easterly from Madison to Milwaukee, over a 71-mile route that is now 72 percent complete and will be linked together through Jefferson County in 1965, and through Milwaukee County in 1966. I-94 connects at the state line with Illinois Interstate 94 (Tri-State Tollway) from Chicago.

Construction is now underway on Wisconsin I-90 in La Crosse County for approaches to a new 2500-foot, 4-lane Mississippi River bridge to be built in cooperation with Minnesota. Construction is also getting underway on I-94 in Eau Claire County for a twin-bridge crossing of the Chippewa river. Work on these routes will progress substantially in the next several years.

Total cost of the 46-mile Rocky Arbor-Tomah project will approximate \$26 million, including engineering, right of way acquisition, grading, base course, concrete, or bituminous paving and structures. Wisconsin now has completed 285 miles, or about 62 percent, of its total 458-mile allocation of Interstate highways. When completed in 1972, the nationwide Interstate will provide a 41,000-mile network of multi-lane roads to connect 90 percent of all cities of over 50,000 population and most state capitals. . . biggest peacetime public works program in world history.

