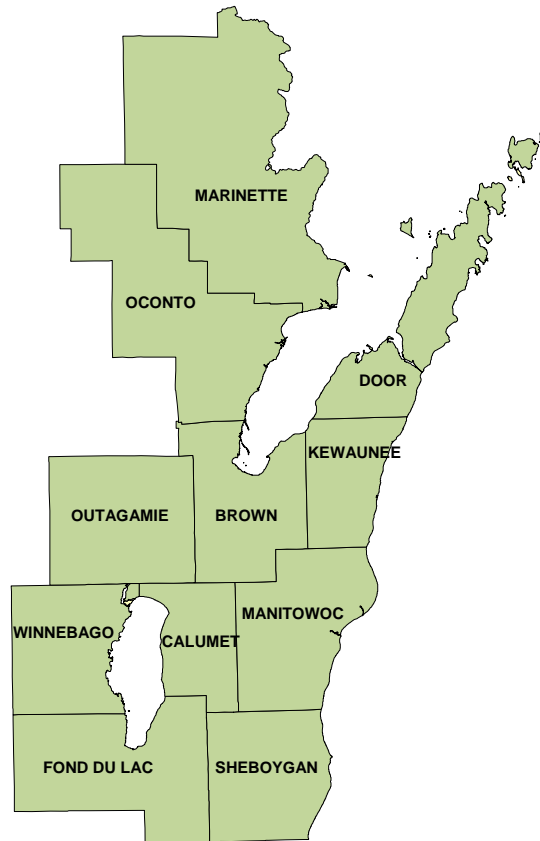


PROPOSED HIGHWAY IMPROVEMENT PROGRAM



PRESENTED AT THE
**NORTHEAST REGION
2012 UTILITY CONFERENCE**

STATE OF WISCONSIN
DEPARTMENT OF TRANSPORTATION
DIVISION OF TRANSPORTATION SYSTEM DEVELOPMENT



**Division of Transportation
System Development**
944 Vanderperren Way
Green Bay, WI 54304

Scott Walker, Governor
Mark Gottlieb, P.E., Secretary
Internet: www.dot.wisconsin.gov

Telephone: (920) 492-5623
Facsimile: (920) 492-5640

January 12, 2012

Hello and welcome to the Northeast Annual 2012 Region Utility Conference. This conference serves as a forum to share information regarding or proposed highway improvement projects and the relocation of affected utility facilities. We hope that you find the conference both informative and useful.

The counties within the Northeast Region are Brown, Calumet, Door, Fond du Lac, Kewaunee; Manitowoc, Marinette, Oconto, Outagamie, Sheboygan, and Winnebago.

As part of our commitment to our customers, we have developed this handbook titled *2012 Northeast Region Utility Conference Handbook*. It contains detailed project related information of the region's 6-year highway improvement program (state highway and local road projects). The information in the handbook is current as of December 29, 2011 and is subject to change. We will keep you informed of changes to the program during various stages of the project and through future Utility Conferences.

We ask that each of you provide feedback about today's conference and handbook. Please take a few moments to complete any questionnaire(s) that were distributed during the conference.

We look forward to working with you on future projects and appreciate all your efforts to assist us in creating improved transportation routes.

Sincerely,

Will Dorsey, Director
DTSD NE Region – Green Bay



Wisconsin Department of Transportation
 New regional organization
 Effective July 1, 2011 (updated July 12, 2011)

DIVISION OF TRANSPORTATION SYSTEM DEVELOPMENT (DTSD)

Dan Grasser, Administrator
 Rory Rhinesmith, Deputy Administrator-Statewide Bureaus
 Don Miller, Deputy Administrator-Regions

Statewide Bureau Managers (Madison)

- Bureau of Highway Maintenance – David Vieth, Director
- Bureau of Traffic Operations – John Corbin, Director
- Bureau of Project Development – Beth Cannestra, Director
- Bureau of Structures – Scot Becker, Director
- Bureau of Technical Services – Rebecca Burkel, Director
- Office of Business Outreach & Compliance – Aggo Akyea, Director

Northwest Region
 Don Gutkowski, Director
 (715) 836-2891
 Jerry Mentzel, Deputy Director
 (715) 392-7927

North Central Region
 Russ Habeck, Director
 (715) 421-8363
 Ken Wickham, Deputy Director
 (715) 365-5760

Northeast Region
 Will Dorsey, Director
 (920) 492-5684
 Colleen Harris, Deputy Director
 (920) 492-5678

Southwest Region
 Joe Olson, Director
 (608) 785-9026
 Rose Phetteplace, Deputy Director
 (608) 246-5443

Southeast Region
 Dewayne Johnson, Director
 (262) 548-5682
 Brett Wallace, Deputy Director
 (262) 548-5884

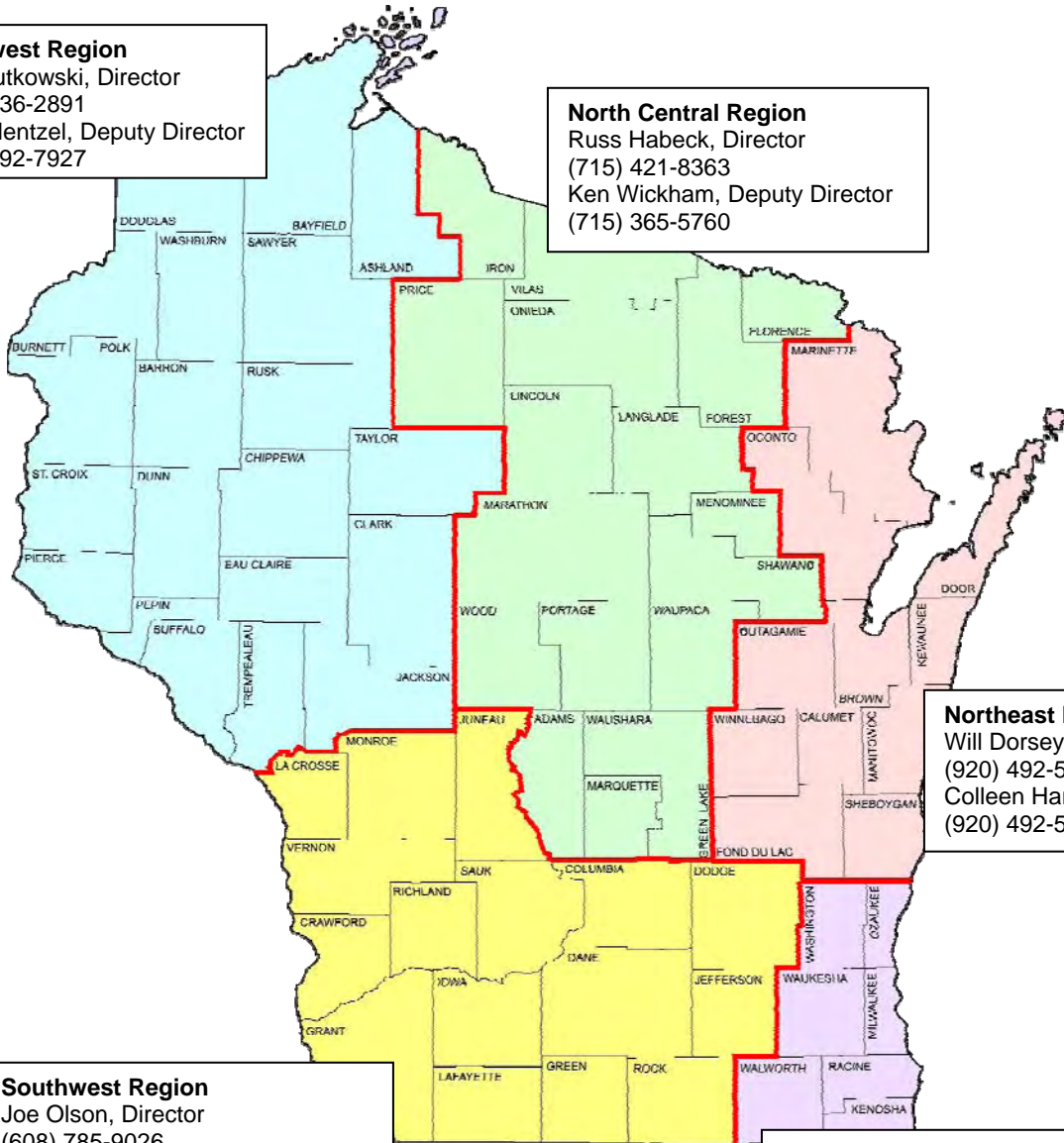


Table of Contents

Northeast Region Department of Transportation Contacts.....	5 - 6
Northeast Region County Highway Commissioners & County Surveyors.....	7
Wisconsin Department of Transportation Websites.....	8
Proposed Highway Improvement Program Definitions	9 -10



DEPARTMENT OF TRANSPORTATION - NORTHEAST REGION
944 Vanderperren Way, Green Bay, WI 54304

Region Director Will Dorsey..... 920-492-5684
Operations Manager..... Colleen Harris..... 920-492-5678
Communications Manager Kim Rudat..... 920-492-5743

Project Development

Project Development Manager..... Al Rommel 920-492-5675

Brown County

Project Development Supervisor..... Steve Noel..... 920-492-5630
Project Manager..... Dan Segerstrom 920-492-7718

Calumet County

Project Development Supervisor..... Rebecca Rooyakkers 920-492-2394
Project Manager..... Matt Haefs 920-492-5702

Door County

Project Development Supervisor..... Steven Noel..... 920-492-5630
Project Manager..... Bryan Lipke 920-492-5703

Fond du Lac County

Project Development Supervisor..... Steve Noel..... 920-492-5630
Project Manager..... Keith Sowinski 920-492-4132

Kewaunee County

Project Development Supervisor..... Steve Noel..... 920-492-5630
Project Manager..... Bryan Lipke 920-492-5703

Manitowoc County

Project Development Supervisor..... Rebecca Rooyakkers 920-492-2394
Project Manager..... Matt Haefs 920-492-5702

Marinette County

Project Development Supervisor..... Steven Noel..... 920-492-5630
Project Manager..... Paul Zoellner..... 920-492-0132

Oconto County

Project Development Supervisor..... Steven Noel..... 920-492-5630
Project Manager..... Paul Zoellner..... 920-492-0132

Outagamie County

Project Development Supervisor..... Rebecca Rooyakkers 920-492-2394
Project Manager..... Charles Karow 920-492-5997

Sheboygan County

Development Supervisor Steven Noel..... 920-492-5630
Project Manager..... Paul Brauer 920-492-0135

Winnebago County

Project Development Supervisor..... Rebecca Rooyakkers 920-492-2394
Project Manager..... Bill Bertrand 920-492-5708



DEPARTMENT OF TRANSPORTATION - NORTHEAST REGION
944 Vanderperren Way, Green Bay, WI 54304

USH 41 TEAM

Manager.....	Brian Roper.....	920-492-2255
Construction Supervisor	Mike King.....	920-492-2244
Design Supervisor.....	Vacant	
Brown County North Project Manager	Paul Vraney	920-492-2232
Brown County South Project Manager	Kurt Peters	920-492-2213
Winnebago County Project Manager.....	Tom Buchholz	920-492-2227
Construction Project Manager	Craig Treadway	920-492-2233

Systems Planning and Operations

Systems Planning and Operations Manager	Brian Brock.....	920-492-5621
Maintenance Supervisor	Kurt Wranovsky	920-492-5645
Planning Supervisor.....	Jill Michaelson.....	920-492-5698
Planning Supervisor.....	Jenny Cavanaugh.....	920-492-5986
Structure Maintenance Engineer	Vacant	
Structure Maintenance Engineer.....	Dale Weber.....	920-492-7161
Traffic Supervisor.....	Chris Blazek.....	920-492-4128

Technical Services

Technical Services Manager	H. Bruce Enke	920-492-5659
Real Estate Supervisor.....	Norman Pawelczyk	920-492-7708
Technical Services Supervisor	John Mahlik	920-492-5657
Right of Way Plat Coordinator.....	Carolyn Sampson.	920-492-5695
Survey Coordinator.....	Cormac McInnis	920-492-5638
Environmental Coordinator.....	Michael Helmrick.....	920-492-7738
Environmental Coordinator.....	Kathie VanPrice.....	920-492-7175
Railroad Coordinator	Jared Kinziger.....	920-492-7713

Utility Section

Utility Coordinator/Permits.....	Ray Drake	920-492-5701
Utility Coordinator.....	Bruce Rayden	920-492-4101
Utility Coordinator.....	Andy Devos	920-492-5995
Utility Coordinator.....	Jeffrey Orr.....	920-492-3511

Local Program & Consultant Unit

Supervisor.....	Jim Thompson	920-492-5670
Projects Manager	Dave Schmidt	920-492-0137
Projects Manager	Brian Edwards	920-492-0149
Projects Manager (Short Elliot Hendrickson).....	Jeff Saxby	920-380-2805

**Wisconsin County Highway Association
County Highway Commissioners Link**

http://www.wcha.net/CO/CO_page.html

Wisconsin County Surveyors Listing

http://www.sco.wisc.edu/surveying/wi_county_surveyors.php

Wisconsin Department of Transportation Websites

Statewide Plans & Projects

<http://www.dot.wisconsin.gov/projects/index.htm>

Regional Utility Conference Handbooks

<http://www.dot.wisconsin.gov/library/publications/format/utility.htm>

WisDOT Guide to Utility Coordination

<http://roadwaystandards.dot.wi.gov/standards/util/index.htm>

Airports by County and Transportation Region

<http://www.dot.wisconsin.gov/travel/air/airportsbydist.htm>

Connecting Highway Aids

<http://www.dot.wisconsin.gov/localgov/highways/connecting.htm>

Official State Trunk Highway System Maps

<http://www.dot.wisconsin.gov/travel/maps/sth.htm>

State Right-of-Way Permits

<http://www.dot.wisconsin.gov/business/rules/property-permits.htm>

Utility Accommodation Policy

<http://www.dot.wisconsin.gov/business/rules/property-uap.htm>

Digger's Hotline

<http://www.diggershotline.com>

Northeast Region Permit Application Inbox

dotdtsdneutilitycoordination@dot.wi.gov

Work Zone Safety Pocket Guide

<http://www.dot.wisconsin.gov/business/rules/docs/wzsb.pdf>

Wisconsin Lane Closure System

<http://transportal.cee.wisc.edu/closures/>

Proposed Highway Improvement Program Definitions

Resurfacing

Resurfacing means placing a new surface on an existing roadway to provide a better all-weather surface, a better riding surface, and to extend or renew the pavement life. It includes pavement widening and shoulder paving (without changing the subgrade shoulder points). Generally, it involves no improvement in capacity or geometrics. Resurfacing may include some elimination or shielding of roadside obstacles, culvert replacements, signals, pavement marking, signing and intersection improvements. Usually, no additional right-of-way is required; except possible minor acquisition for drainage and intersection improvements.

Additional Criteria

- Overlay must be placed directly on top of existing pavement (no intervening base course)
- May include spot replacement of curb and gutter in urban areas

Pavement Replacement

Pavement Replacement means structural improvement to the pavement structure or removal of the total thickness of all paving layers from an existing roadway and providing a new paved surface without changing the subgrade. It may include restoration of the base aggregate by adding more material before re-paving or adding base aggregate open-graded with drainage system. It generally involves no improvement in capacity or geometrics and no increase in roadbed width. Pavement replacement may include some elimination or shielding of roadside obstacles, culvert replacement, signals, pavement marking, signing and intersection improvements. Additional right-of-way is typically not required.

Additional Criteria

- “Paving layers” as used above means existing asphalt and concrete
- No change to subgrade means location of shoulder points is not changed
- May include curb and gutter replacement to same line and grade
- Does not include storm sewer construction
- May include transfer of width between pavement and shoulders
- May include shoulder paving

Reconditioning

Reconditioning means work in addition to resurfacing or pavement replacement. Reconditioning includes improvement of an isolated grade, curve, intersection or sight distance problem to improve safety, or changing the subgrade to widen shoulders or to correct a structural problem. Reconditioning projects may require additional right-of-way.

Additional Criteria

- Does not include, increasing the number of driving lanes
- May include replacing and/or expanding existing storm sewer systems
- May include continuous shoulder, pavement or subgrade widening
- Does not include adding continuous lanes
- May include reconstruction not to exceed 50% of the length of the project
- May include replacement of curb and gutter in urban areas with up to 50% of new curb & gutter on new horizontal or vertical alignment.

Reconstruction

Reconstruction means total rebuilding of both the pavement and subgrade of an existing highway to improve maintainability, safety, geometrics and traffic service. It is accomplished basically on existing location, and major elements may include flattening of hills and grades, improvement of curves, widening of the roadbed, and elimination or shielding of roadside obstacles. It includes minor widening of urban streets to widen lanes or to add parking, bicycle accommodations or auxiliary lanes. Removing parking together with pavement replacement is in this category, because the traffic carrying capacity of the roadway is increased without actually constructing new through travel lanes. Normally, this type of reconstruction will require some additional right-of-way.

Additional Criteria

- Work that either changes the location of the existing subgrade shoulder points or removes all of the existing pavement and base course for at least 50% of the length of the project.

Expansion

Expansion includes the same types of work associated with reconstruction, but also involves the construction of additional through travel lanes. In some cases, expansion may include construction of an entirely new street or highway on new alignment. Substantial land acquisitions may occur with these types of projects. Major projects are excluded from this definition. [EA]

Additional Criteria

- Same as Reconstruction
- Additional travel lanes may be either on existing or new location - May or may not include rebuilding the existing roadway.
- Relocation, as used below, means changing the horizontal alignment sufficiently so that the old and new right-of-way are no longer contiguous.

Bridge Rehabilitation

Bridge Rehabilitation means the repair, restoration or replacement of the components of the existing structure, including asphaltic surfacing or concrete overlays, as well as work to correct safety defects. Additional right-of-way will typically not be required, except minimal acquisitions may be necessary to accommodate ancillary improvements for drainage or for the construction of an abutment or pier.

Additional Criteria

- Includes widening of superstructure and substructure components
- Includes replacement of any superstructure component
- May include replacement of portions of abutments or piers

Bridge Replacement

Bridge Replacement means the building of a new bridge at the location of the existing structure or at a new location usually contiguous to the existing structure. A minor acquisition of additional right-of-way may be required.

Additional Criteria

- Includes replacement bridges with wider lanes and shoulders or additional lanes
- Includes eliminating grade separations and replacing with at-grade crossings
- Includes box culverts or a series of pipes wide enough to be classified as a bridge
- A bridge of any length or type may be replaced by any other