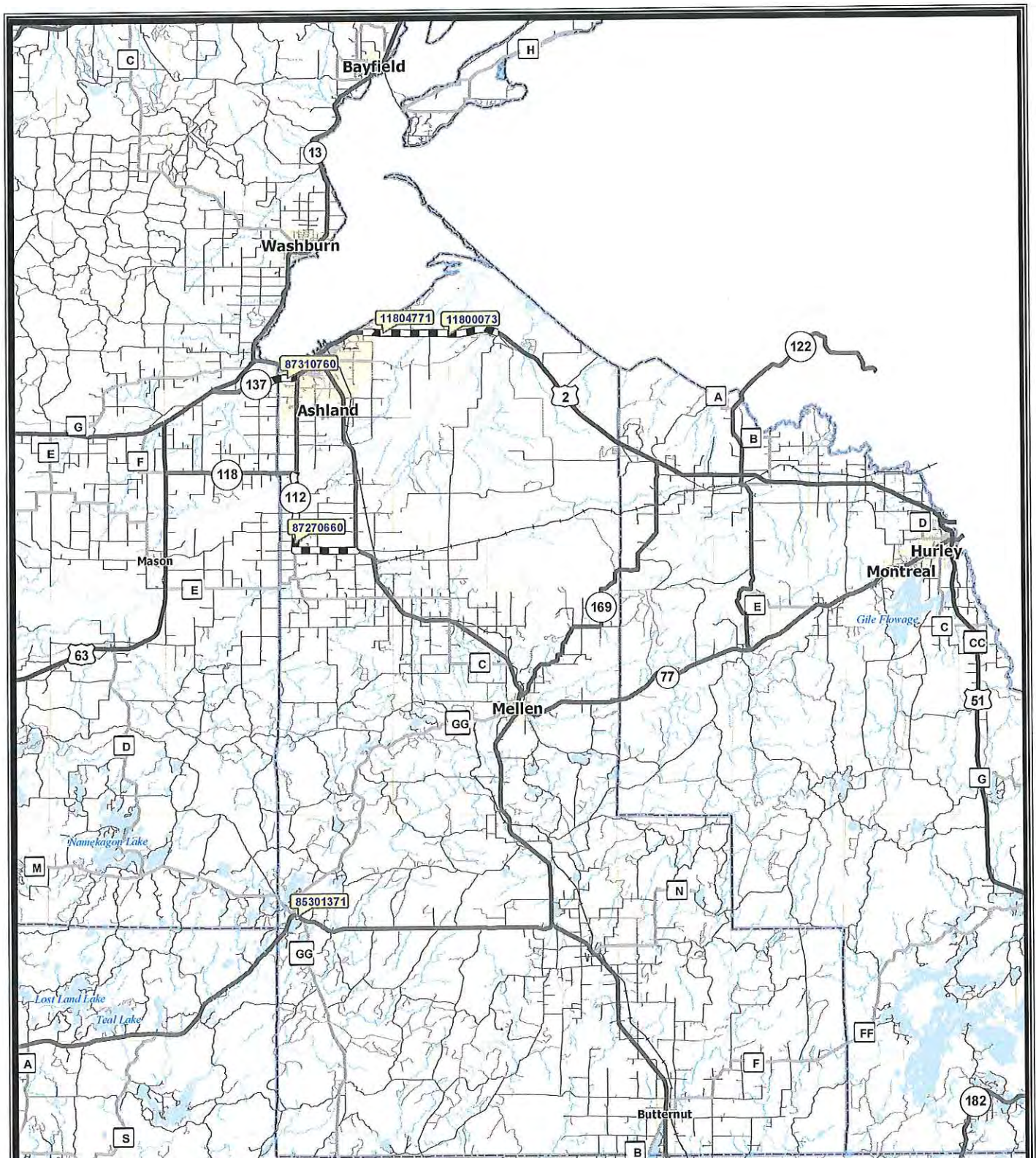


HIGHWAY IMPROVEMENT PROGRAM FOR UTILITY COORDINATION

ASHLAND COUNTY

HWY	DESIGN ID	CONSTRUCT ID	BUILD YEAR	LET DATE	TITLE	LIMIT	MILES	SCOPE OF WORK
STH-112	8727-06-00	8727-06-60	2011	2/8/2011	MARENGO - ASHLAND	STH 13-STH 118	7.44	RD MAINTENANCE
STH-137	8731-07-30	8731-07-60	2011	2/8/2011	INO - ASHLAND	SAJDAK RD-STH 112	1.83	RD MAINTENANCE
USH-002	1180-00-03	1180-00-73	2011	4/12/2011	ASHLAND - SAXON	36TH -GOVERNMENT RD	7.17	RESURFACING
USH-002	1180-47-00	1180-47-71	2011	4/12/2011	ASHLAND - ODANAH	BEAR TRAP CR BR	0	BRIDGE REHAB
STH-077	8530-13-00	8530-13-71	2012	6/14/2011	CLAM LAKE - STH 13	W FORK CHIPPEWA RV BRG	0.05	BRIDGE REPLACE
NON-HWY	1009-60-58	1009-60-60	2011	6/25/2011	LOWER BAD RV WATERSHED	BEAR TRAP CR WETLAND BANK	0	MISCELLANEOUS
STH-077	8530-14-00	8530-14-71	2014	4/8/2014	CLAM LAKE - STH 13	CTH M-STH 13	13.85	RESURFACING
STH-013	1610-00-05	1610-00-75	2015	11/10/2014	MELLEN - ASHLAND	SILVER CR CULVERT	0.03	MISC
STH-013	1610-08-02	1610-08-72	2015	11/10/2014	MELLEN - ASHLAND	STH 112-BUTTERWORTH	7.23	RESURFACING
STH-013	1610-08-31	1610-08-74	2016	9/8/2015	PARK FALLS - MELLEN	CTH N-CAYUGA RD	9.93	RESURFACING
STH-137	8731-05-00	8731-05-70	2016	1/12/2016	C ASHLAND 6TH ST WEST	STH 112-STH 13	1.48	RECONSTRUCT
STH-013	1610-08-03	1610-08-73	2017	9/9/2016	MELLEN - ASHLAND	GOLF COURSE RD-STH 112	10.46	RESURFACING
LOCAL								
CTH-N	9953-00-00	9953-00-70	2011	3/8/2011	STH 13 - GLIDDEN	E FK CHIPPEWA RIVER BR	0.052	BRREPLACE
NON-HWY	9952-15-06	9952-15-76	2011	4/25/2011	ASHLAND PED INFRAST	VARIOUS SWALK LOC IN ASHLAND	0	MISC
LOC-STR	9952-16-00	9952-16-71	2012	12/13/2011	11TH AVE EAST - ASHLAND)	USH 2 SE 1.0M TO INT 11TH AVE	1.5	RECONSTRUCT
LOC-STR	9954-00-00	9954-00-70	2013	2/14/2012	LAPOINTE RECONST RICE ST	STORM SEWER SWALK & PARKING	0	RECONSTRUCT

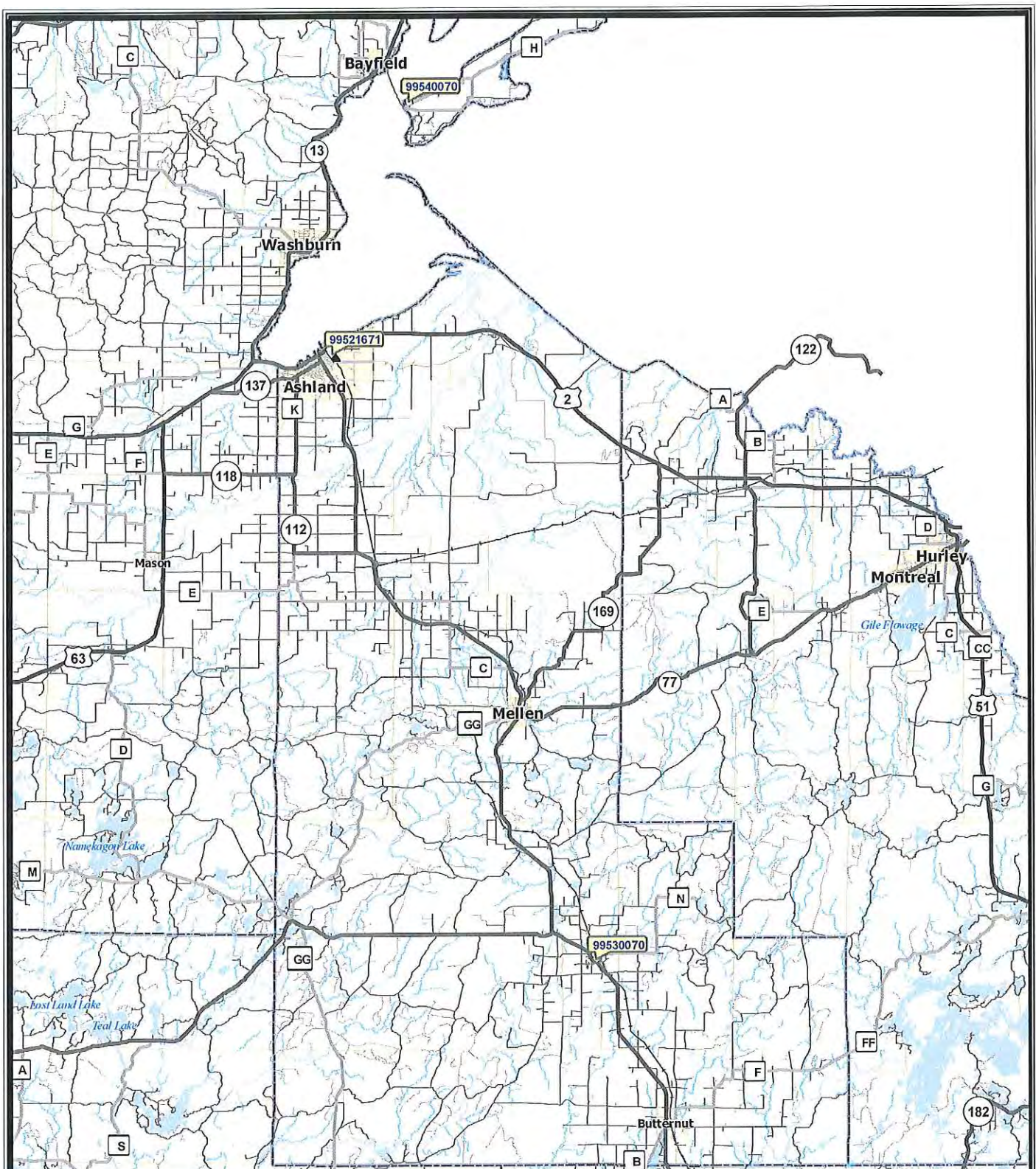


	Interstate Highways		Railroads		Cities
	US Highways		Rivers / Streams		Villages
	State Highways		Water Bodies		Township
	County Roads		WisDOT Project		
	Rural Roads				
	Local Roads		Scale		
			1 inch = 7.1 miles		



ASHLAND COUNTY STATE HIGHWAY PROJECTS 2011 - 2013

Data as of January 26, 2011



	Interstate Highways		Railroads		Cities
	US Highways		Rivers / Streams		Villages
	State Highways		Water Bodies		Township
	County Roads		WisDOT Project		
	Rural Roads				
	Local Roads				



Scale
1 inch = 7.1 miles



ASHLAND COUNTY LOCAL ROADS PROJECTS 2011 - 2013

Data as of January 26, 2011