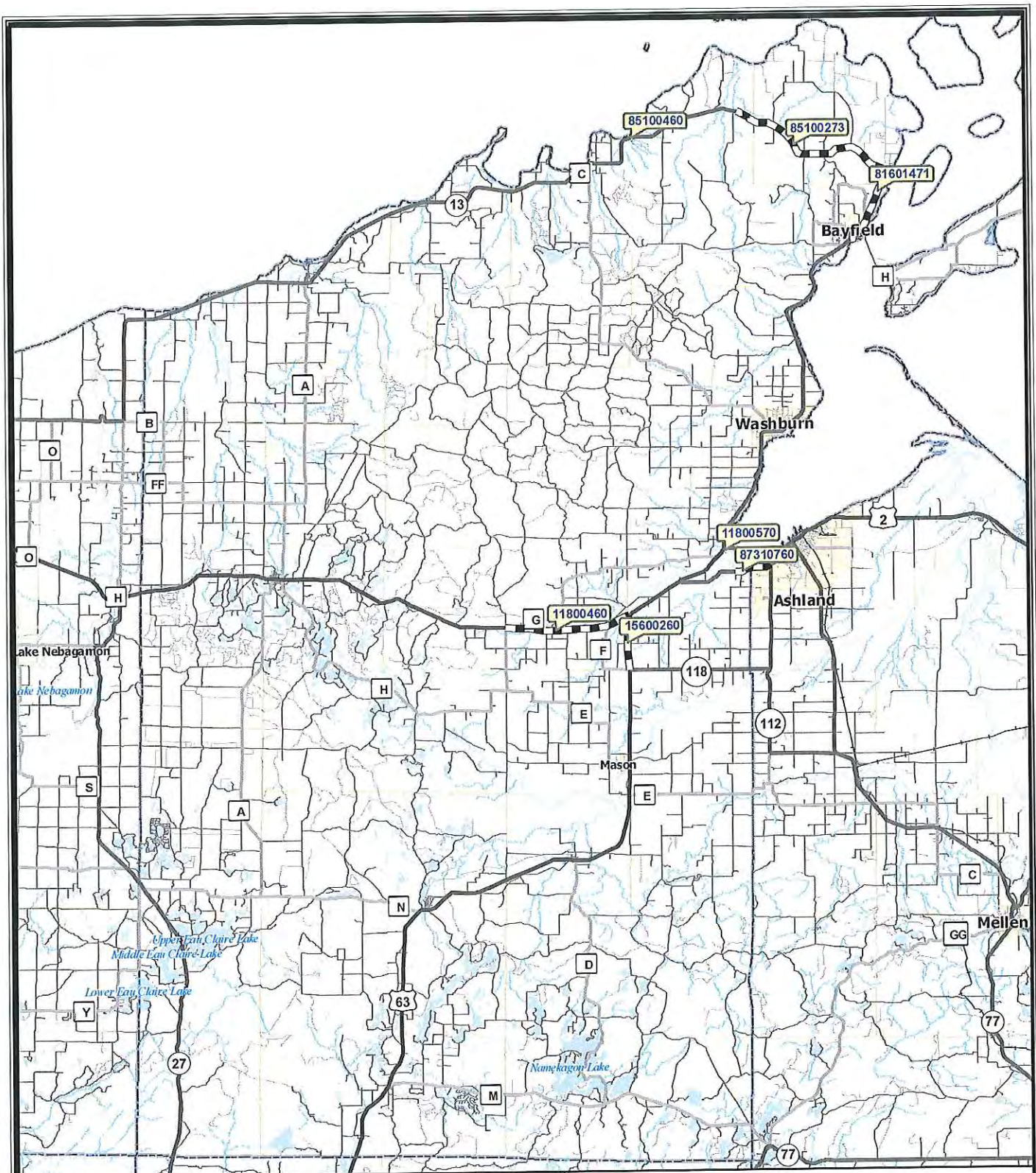


HIGHWAY IMPROVEMENT PROGRAM FOR UTILITY COORDINATION

BAYFIELD COUNTY

HWY	DESIGN ID	CONSTRUCT ID	BUILD YEAR	LET DATE	TITLE	LIMIT	MILES	SCOPE OF WORK
USH-002	1180-05-01	1180-05-70	2011	3/8/2011	INO - ASHLAND	STH 13 NORTH BOUND INTER	0.05	RECONSTRUCT
STH-013	8510-02-03	8510-02-73	2012	12/13/2011	CORNUCOPIA - RED CLIFF	ECHO VALLEY RD-OLD CTH K EAST	6.75	PAVEMENT REPLACE
STH-013	8160-14-00	8160-14-71	2013	2/12/2013	BAYFIELD - CORNUCOPIA	7TH ST-OLD CTH K	5.96	PAVEMENT REPLACE
USH-002	1180-04-30	1180-04-60	2013	4/9/2013	INO - ASHLAND	CTH E-USH 63	6.1	RD MAINTENANCE
USH-063	1560-02-30	1560-02-60	2013	4/9/2013	DRUMOND - USH 2	STH 118-USH 2	2.62	RD MAINTENANCE
STH-013	8510-19-00	8510-19-71	2015	12/9/2014	CORNUCOPIA - RED CLIFF	OLD 13 RD-ECHO VALLEY RD	9.93	PAVEMENT REPLACE
LOCAL								
TWN-RD	8356-00-00	8356-00-70	2012	3/13/2012	GRANDVIEW TAYLOR LN	LONG LAKE BRANCH BRB040096	0	BRREPLACE
CTH-C	8740-00-02	8740-00-72	2012	3/13/2012	WASHBURN - CORNUCOPIA	FR 252 TO NORTH BOUNDARY RD	0	RECONSTRUCT



- | | | | | | |
|--|---------------------|--|------------------|--|----------|
| | Interstate Highways | | Railroads | | Cities |
| | US Highways | | Rivers / Streams | | Villages |
| | State Highways | | Water Bodies | | Township |
| | County Roads | | WisDOT Project | | |
| | Rural Roads | | | | |
| | Local Roads | | | | |

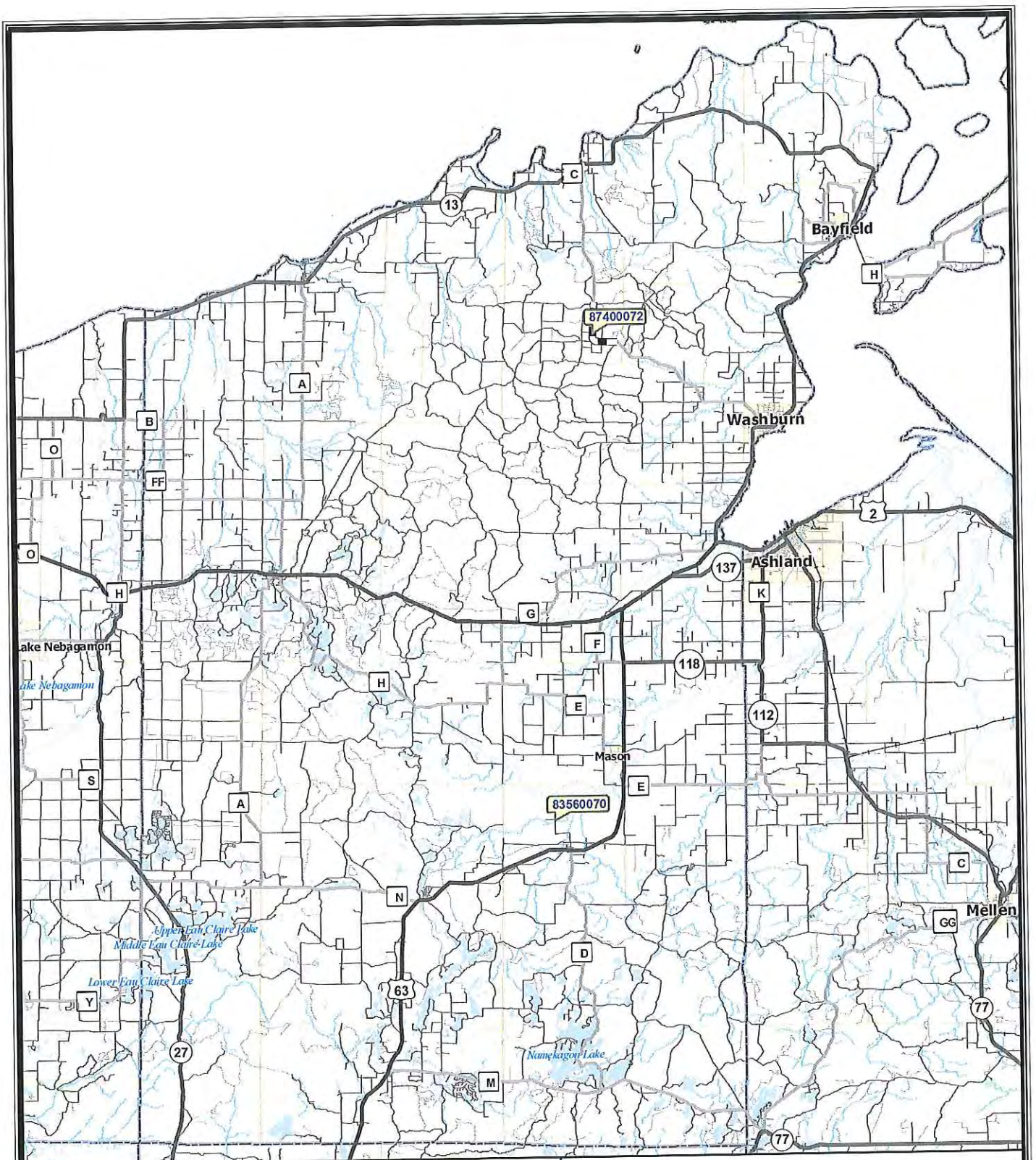


Scale
1 inch = 6.6 miles



BAYFIELD COUNTY STATE HIGHWAY PROJECTS 2011 - 2013

Data as of January 26, 2011



- | | | | | | |
|--|---------------------|--|------------------|--|----------|
| | Interstate Highways | | Railroads | | Cities |
| | US Highways | | Rivers / Streams | | Villages |
| | State Highways | | Water Bodies | | Township |
| | County Roads | | WisDOT Project | | |
| | Rural Roads | | | | |
| | Local Roads | | | | |



Scale
1 inch = 6.6 miles



BAYFIELD COUNTY LOCAL ROADS PROJECTS 2011 - 2013

Data as of January 26, 2011