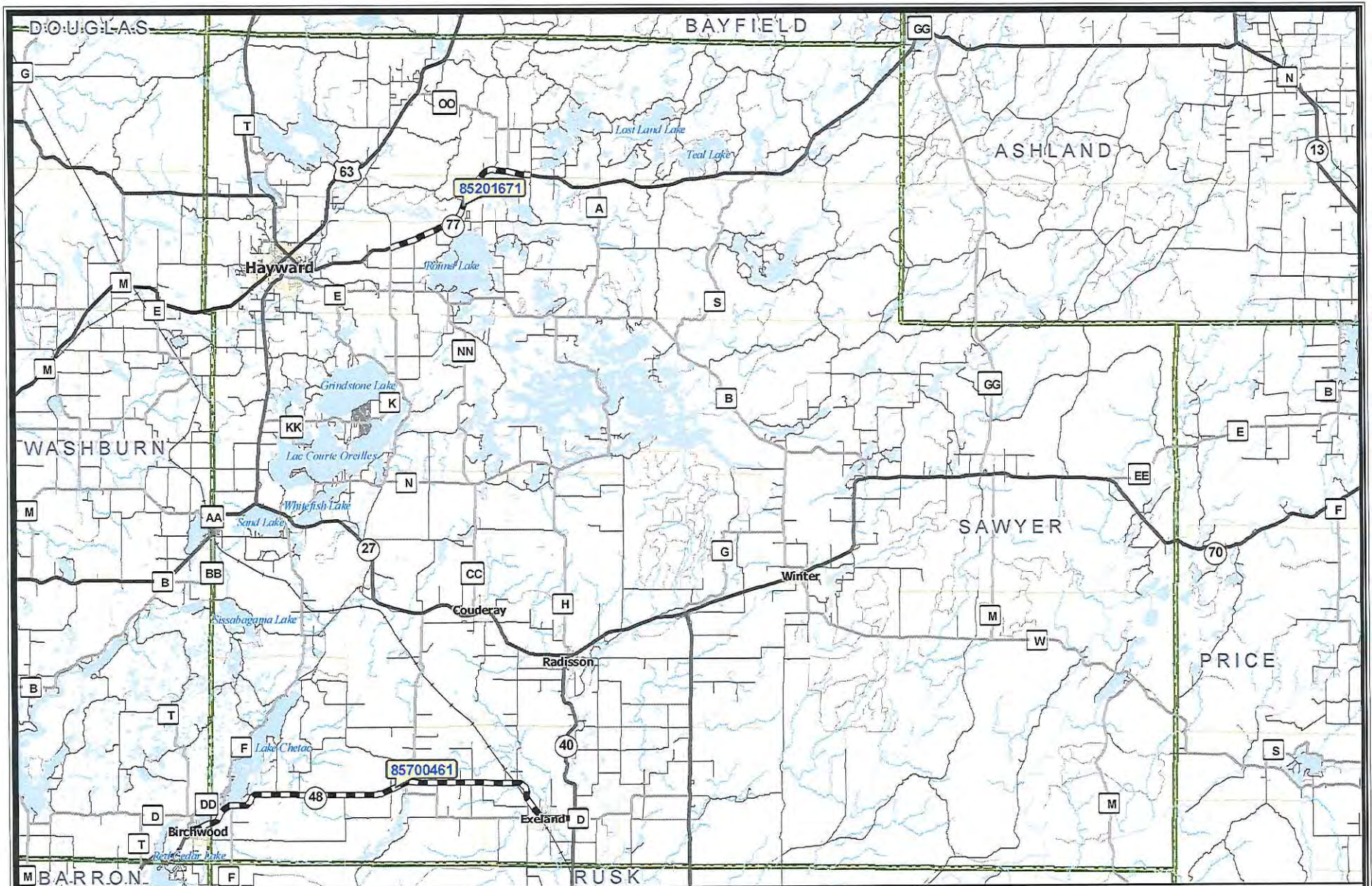


HIGHWAY IMPROVEMENT PROGRAM FOR UTILITY COORDINATION

SAWYER COUNTY

HWY	DESIGN ID	CONSTRUCT ID	BUILD YEAR	LET DATE	TITLE	LIMIT	MILES	SCOPE OF WORK
STH-048	8570-04-31	8570-04-61	2011	2/8/2011	BIRCHWOOD - EXELAND	W PARK AVE-STH 40	18.6	RD MAINTENANCE
STH-077	8520-16-00	8520-16-71	2014	3/11/2014	HAYWARD - CLAM LAKE	CTH K-LOWER TWIN LAKE RD	7.56	RESURFACING
STH-027	8140-25-00	8140-25-71	2016	1/12/2016	HAYWARD S DAKOTA AVE	NAMEKAGON RV BR:B-57-0058	0.01	BR REHAB (SHRM)
STH-070	8170-01-33	8170-01-63	2016	7/12/2016	OJIBWA - OXBO	CTH W-CTH GG	10.77	RD MAINTENANCE
STH-048	8570-00-30	8570-00-60	2016	7/12/2016	V EXELAND 2ND ST	WEIRGOR CR BR B-57-0052	0.04	BRIDGE REHAB
STH-027	8140-00-00	8140-00-70	2018	11/14/2017	HAYWARD SOUTH DAKOTA AVE	CTH B-USH 63	0.43	RECONSTRUCT
STH-027	8150-20-00	8150-20-60	2018	12/12/2017	LADYSMITH - OJIBWA	BRUNET RV-STH 70	5.01	RD MAINTENANCE
STH-040	8590-22-00	8590-22-60	2018	2/13/2018	BRUCE - RADISSON	SOUTH COUNTY LINE-STH 27	9.87	RD MAINTENANCE
LOCAL								
NON-HWY	8450-00-00	8450-00-70	2012	6/25/2011	HAYWARD CTH B	STH 27 TO CTH K(BIKE&PED TRAIL SYS)	0	MISC
NON-HWY	8450-00-01	8450-00-71	2012	6/25/2011	HAYWARD VARIOUS LOC	BIKE & PED SYSTEM-PHASE II	0	MISC
CTH-E	8773-00-00	8773-00-70	2011	7/12/2011	CTH K - CTH B	CTH K - NORWIS RD	0	RECONDITION
NON-HWY	8461-00-00	8461-00-70	2012	7/25/2011	V WINTER RAILRD AVE	CNW RR DEPOT WELCOME CENTER	0	MISC
CTH-CC	8451-00-00	8451-00-70	2012	5/8/2012	CTH B - CTH H	CHIPPEWA FLOWAGE BRB570082	0	BRREPLACE
CTH-T	8452-05-01	8452-05-71	2012	6/14/2011	HAYWARD - STH 27	HARD ROCK CIRCLE (S) TO STH 27	0	RECONDITION
CTH-S	8780-00-00	8780-00-70	2013	5/14/2013	CTH B - STH 77	CTH H TO STH 77 (FH41)	0	RECONSTRUCT

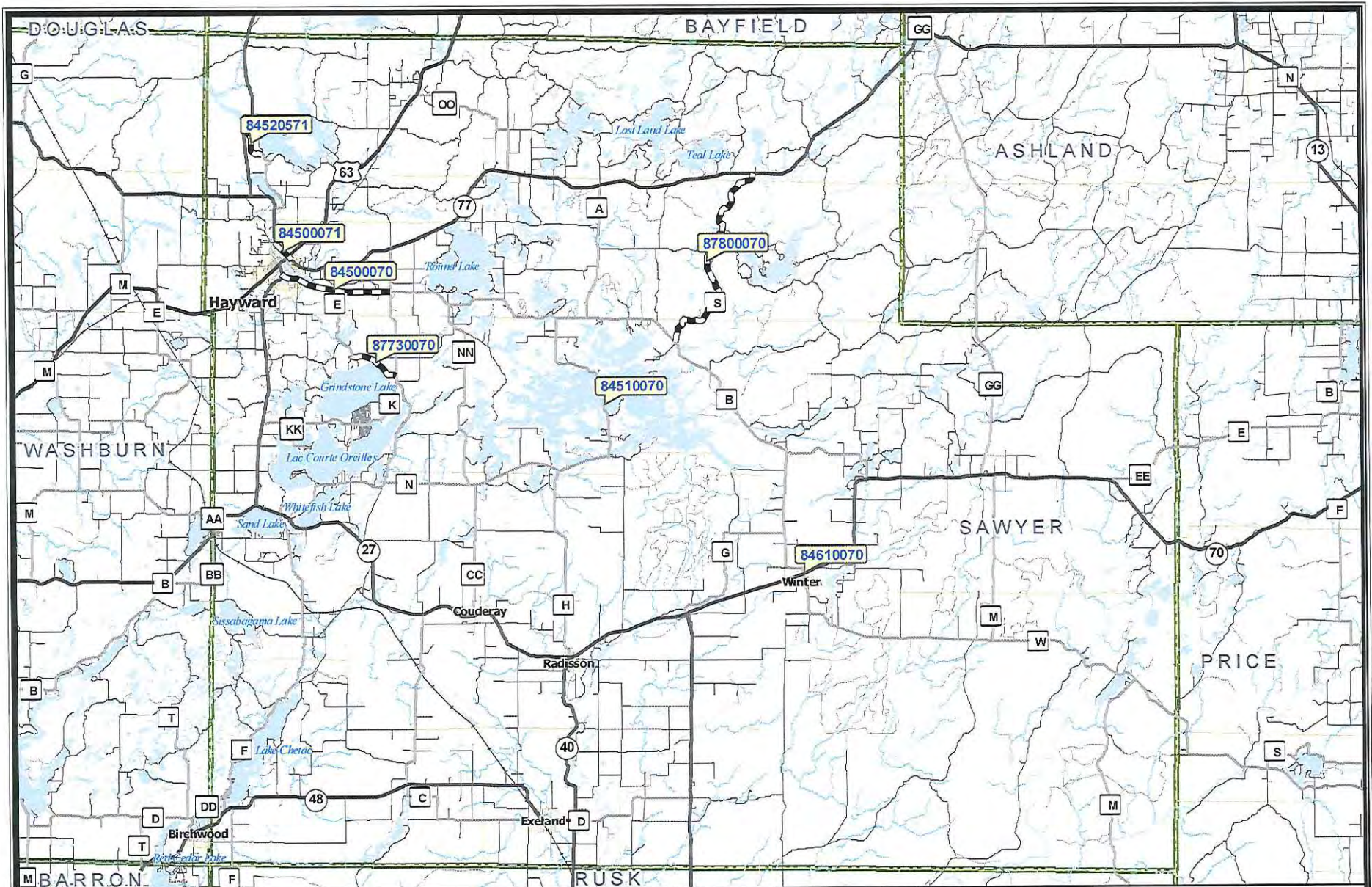


	Interstate Highways		Rural Roads		Railroads		Cities
	US Highways		Local Roads		Rivers / Streams		Villages
	State Highways		WisDOT Project		Water Bodies		Township
	County Roads						

Scale
1 inch = 5.8 miles

**SAWYER COUNTY
STATE HIGHWAY PROJECTS
2011 - 2013**

Data as of January 28, 2011



	Interstate Highways		Rural Roads		Railroads		Cities
	US Highways		Local Roads		Rivers / Streams		Villages
	State Highways		WisDOT Project		Water Bodies		Township
	County Roads						

Scale
1 inch = 5.8 miles

SAWYER COUNTY LOCAL ROADS PROJECTS 2011 - 2013

Data as of January 28, 2011