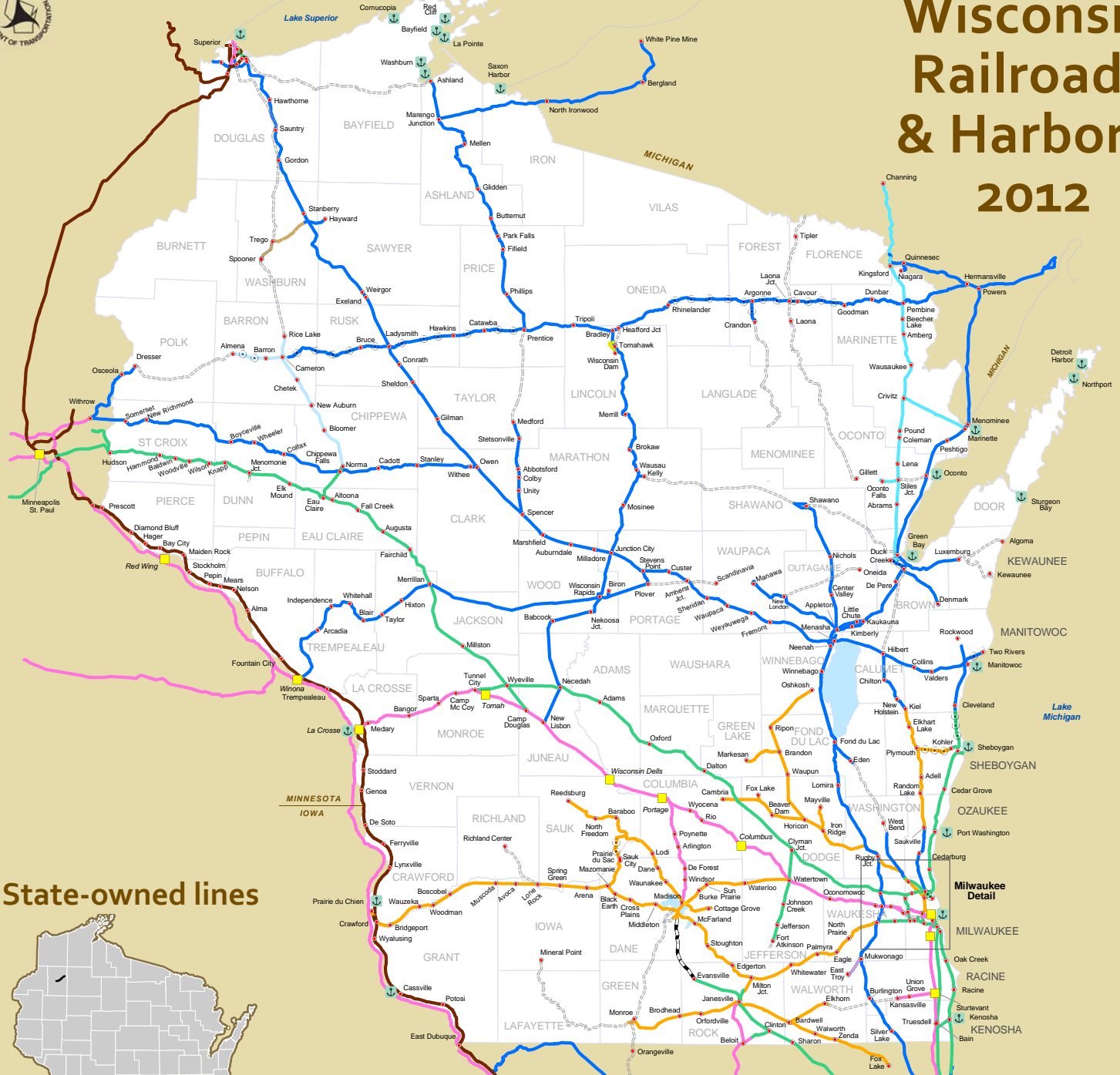
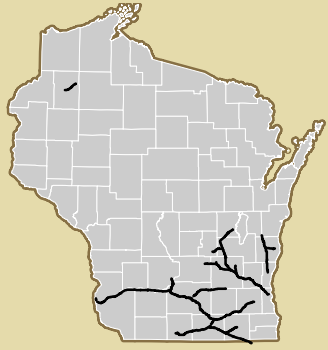




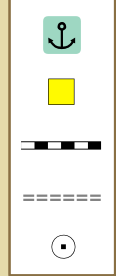
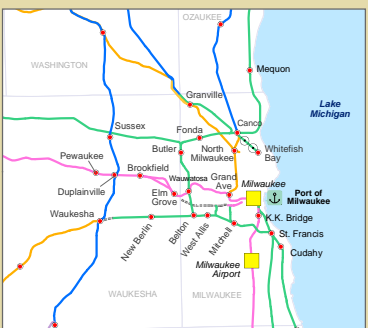
Wisconsin Railroads & Harbors 2012



State-owned lines



Milwaukee detail



Port or Harbor

Amtrak Station

Local Rail Bank¹

Rails-to-Trails

Out of service rail line

	BNSF
	CN
	CPRS
	ELS
	METWR
	PGR
	TR
	UP
	WGN
	WSOR

Burlington Northern-Santa Fe

Canadian National²

Canadian Pacific

Escanaba & Lake Superior

East Troy Railroad Co.

Progressive Rail

Tomahawk Railway

Union Pacific

Wisconsin Great Northern

Wisconsin & Southern Railroad

NOTES:

- 1 Rail bank refers to an out of service rail line, held in public ownership, with track in place, for future rail use.
- 2 Canadian National is the parent company of Wisconsin Central Limited and the Sault St. Marie Railroad.
- Switching and terminal operations (Madison Terminal Railway, LLC, Rail & Transload, Inc. in Watertown, and the Port of Milwaukee) are not shown.
- Map displays rail lines and corridors owned by operating freight railroads and government agencies. Industrial leads, utility company spurs, museum tracks are not shown.
- Line color represents principal operator, may not be owner.