

Appendix I: Noise Receptor Location Maps



Source: HNTB Corporation

Noise Receptor Location Map 3 – Alternative 2b

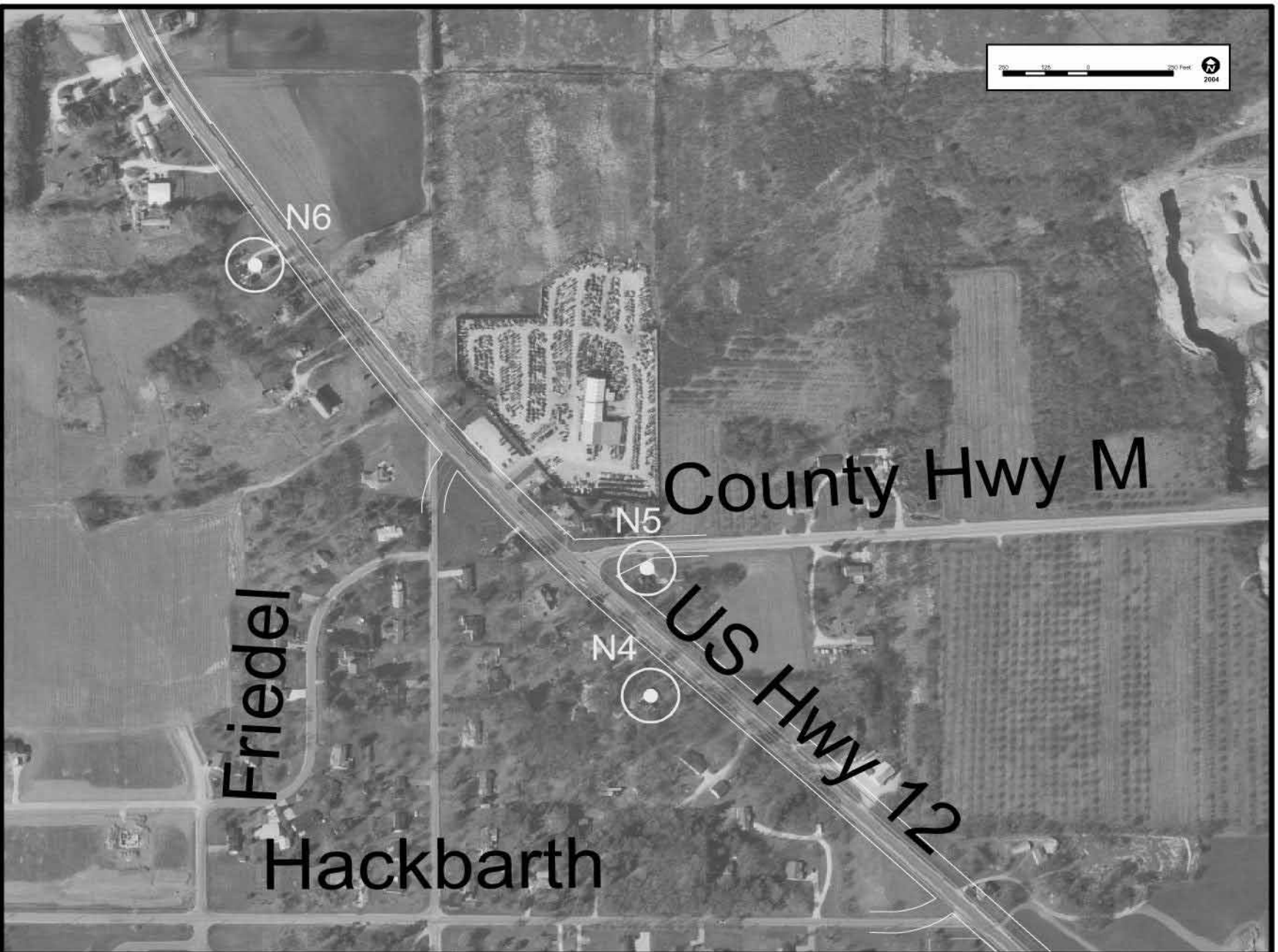


Source: HNTB Corporation



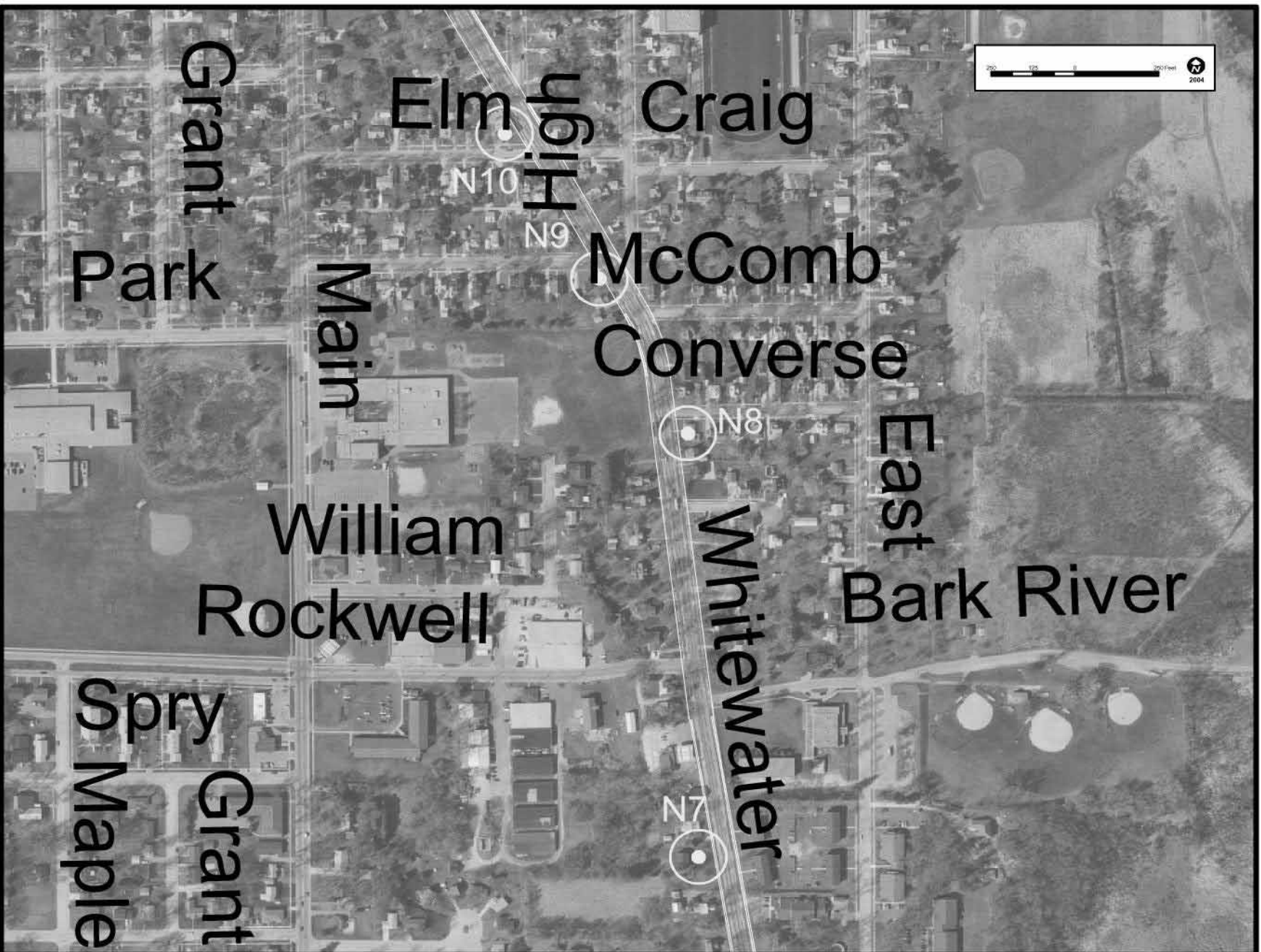
Source: HNTB Corporation

Noise Receptor Location Map 3 – Alternative 2b



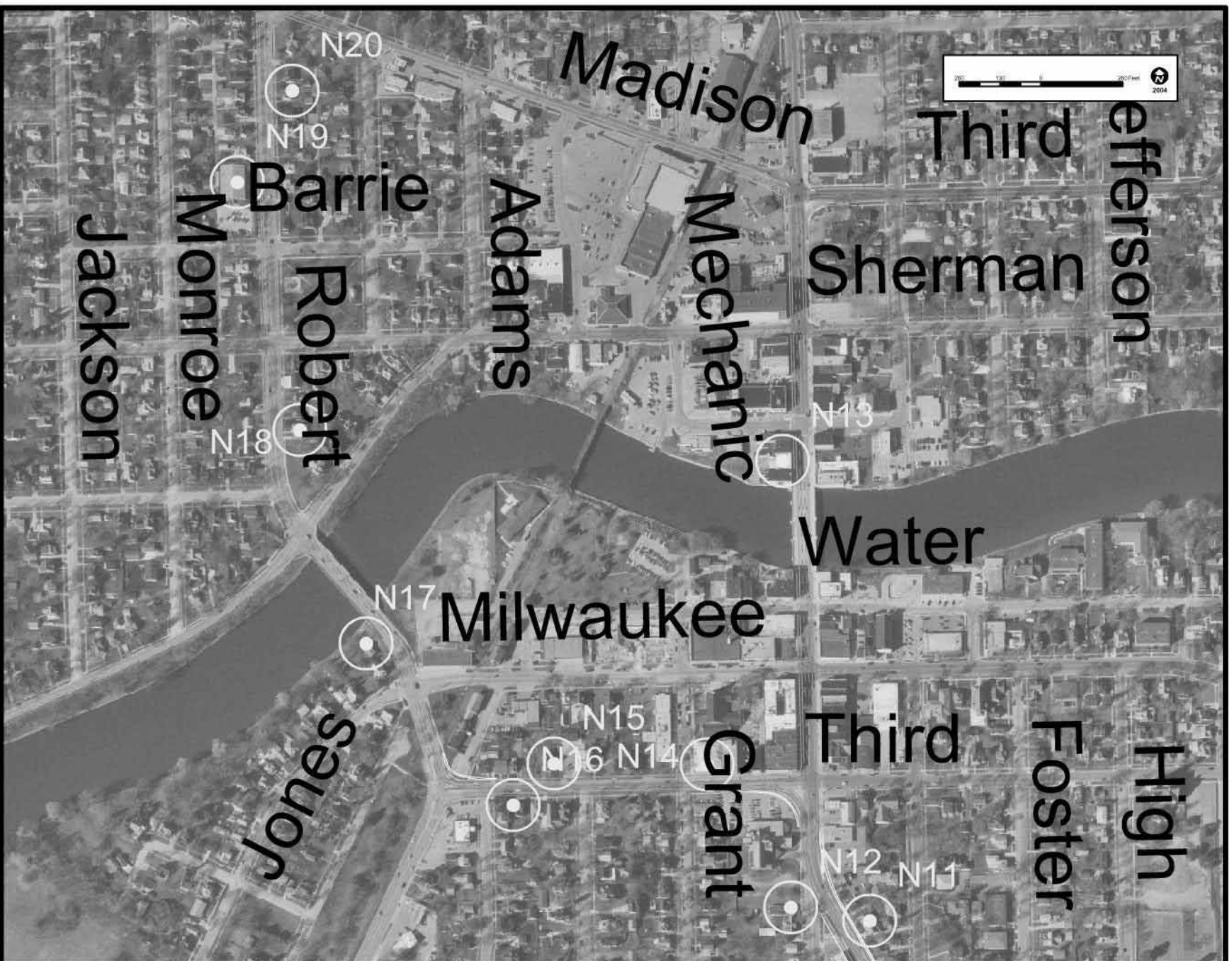
Source: HNTB Corporation

Noise Receptor Location Map 4 – Alternative 2b



Source: HNTB Corporation

Noise Receptor Location Map 5 – Alternative 2b



Source: HNTB Corporation

Noise Receptor Location Map 6 - Alternative 2b



Source: HNTB Corporation

Noise Receptor Location Map 7 - Alternative 3



Source: HNTB Corporation

Noise Receptor Location Map 8 - Alternative 3



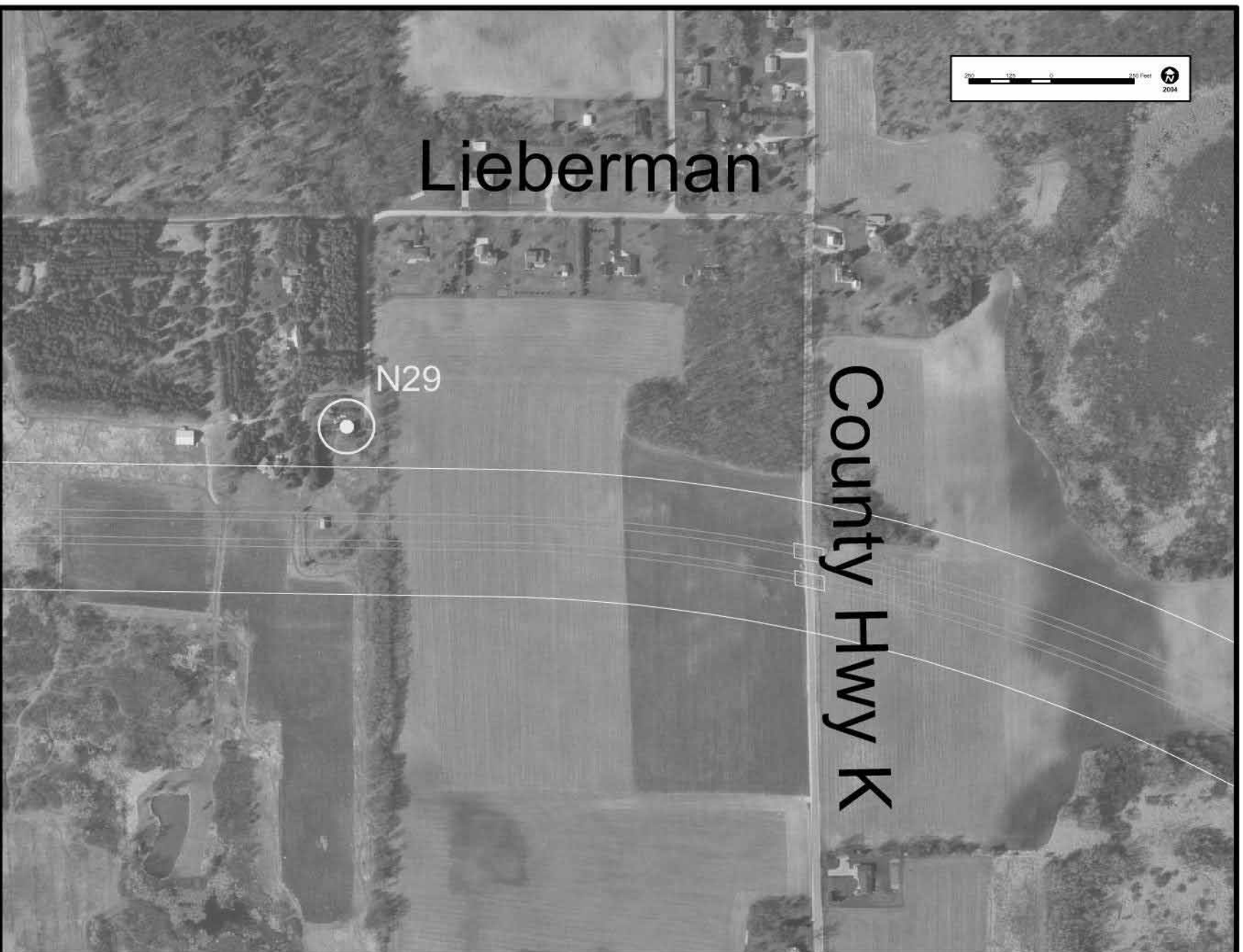
Source: HNTB Corporation

Noise Receptor Location Map 9 - Alternative 3



Source: HNTB Corporation

Noise Receptor Location Map 10 - Alternative



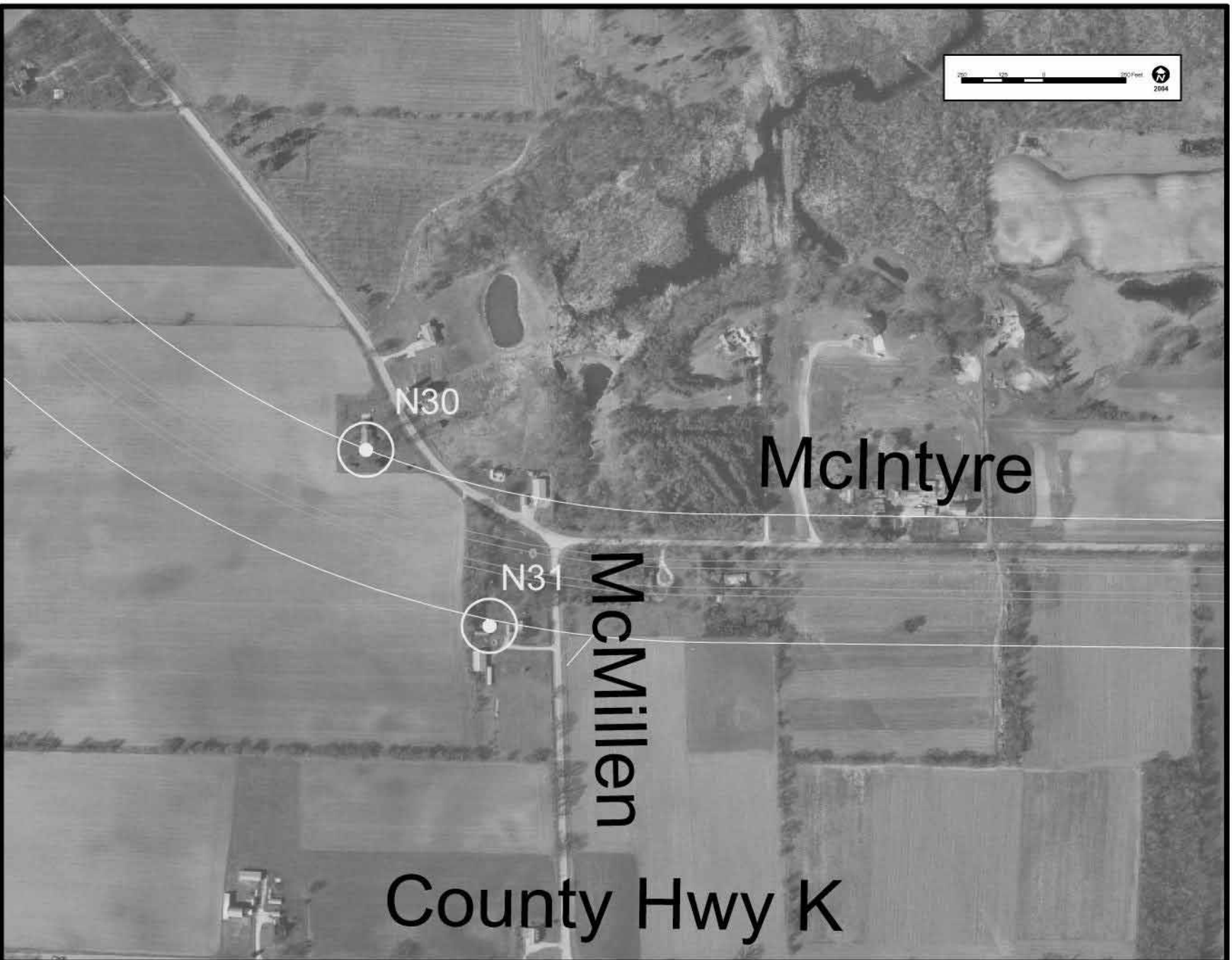
Lieberman

County Hwy K

N29

Source: HNTB Corporation

Noise Receptor Location Map 11 – Alternative 3



Source: HNTB Corporation

Noise Receptor Location Map 12 – Alternative 7a

Appendix J: Correspondence with Potential Section 106 Consulting Parties

This appendix is on file and can be viewed at the WisDOT Southwest Region Office, 2101 Wright St. in Madison.