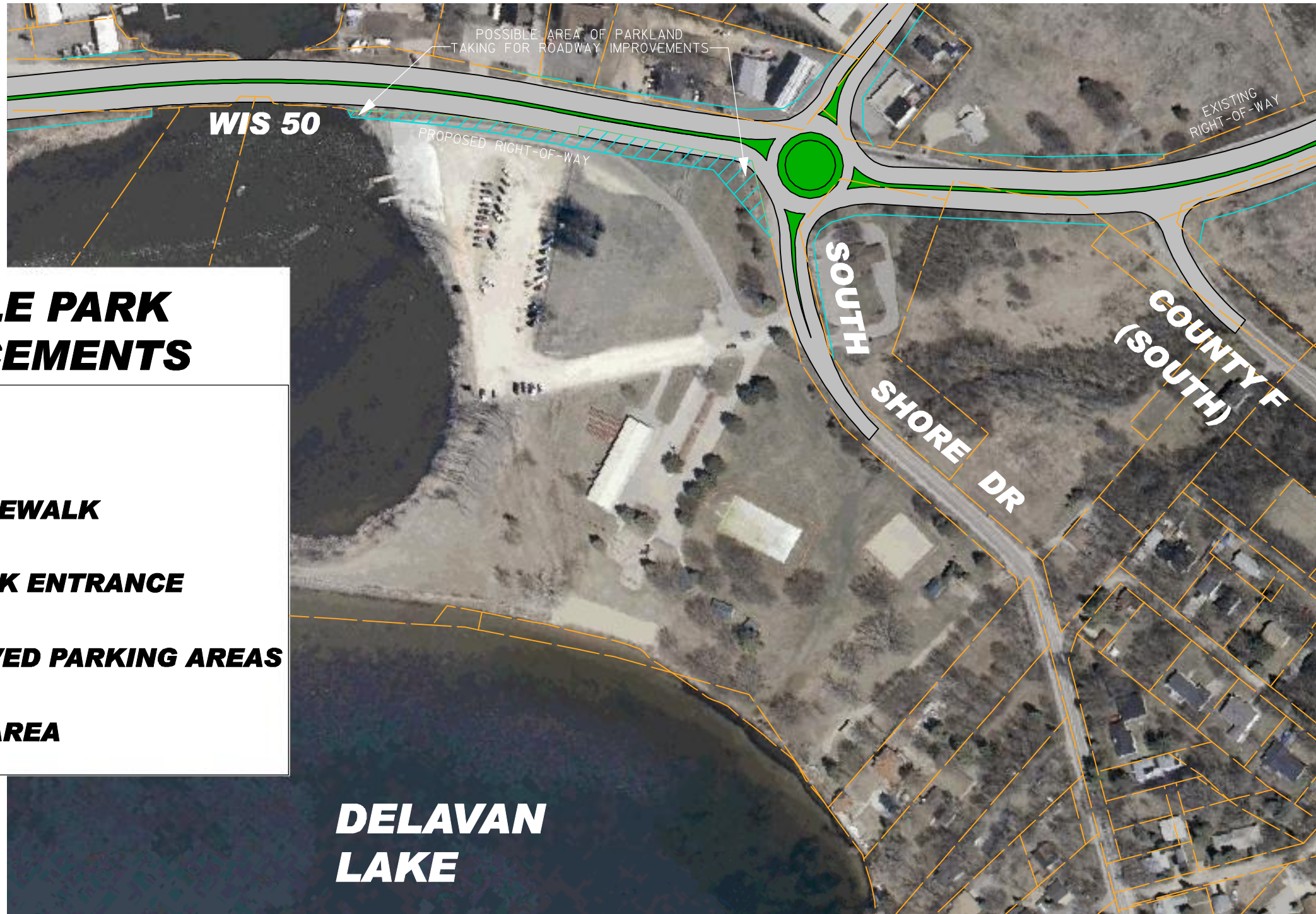
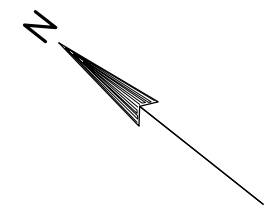


# COMMUNITY PARK IMPROVEMENTS WITH SOUTH AND CENTER ALTERNATIVES



## POSSIBLE PARK ENHANCEMENTS

- ADA PIER
- ADDITIONAL SIDEWALK
- RELOCATED PARK ENTRANCE
- ADDITIONAL PAVED PARKING AREAS
- BOAT STAGING AREA



SCALE, FEET 0 100 200

**\* The South and Center alternatives would require acquisition of parkland. Impacts to the park could be offset by some or all of the enhancements shown. Please let us know your thoughts . \***