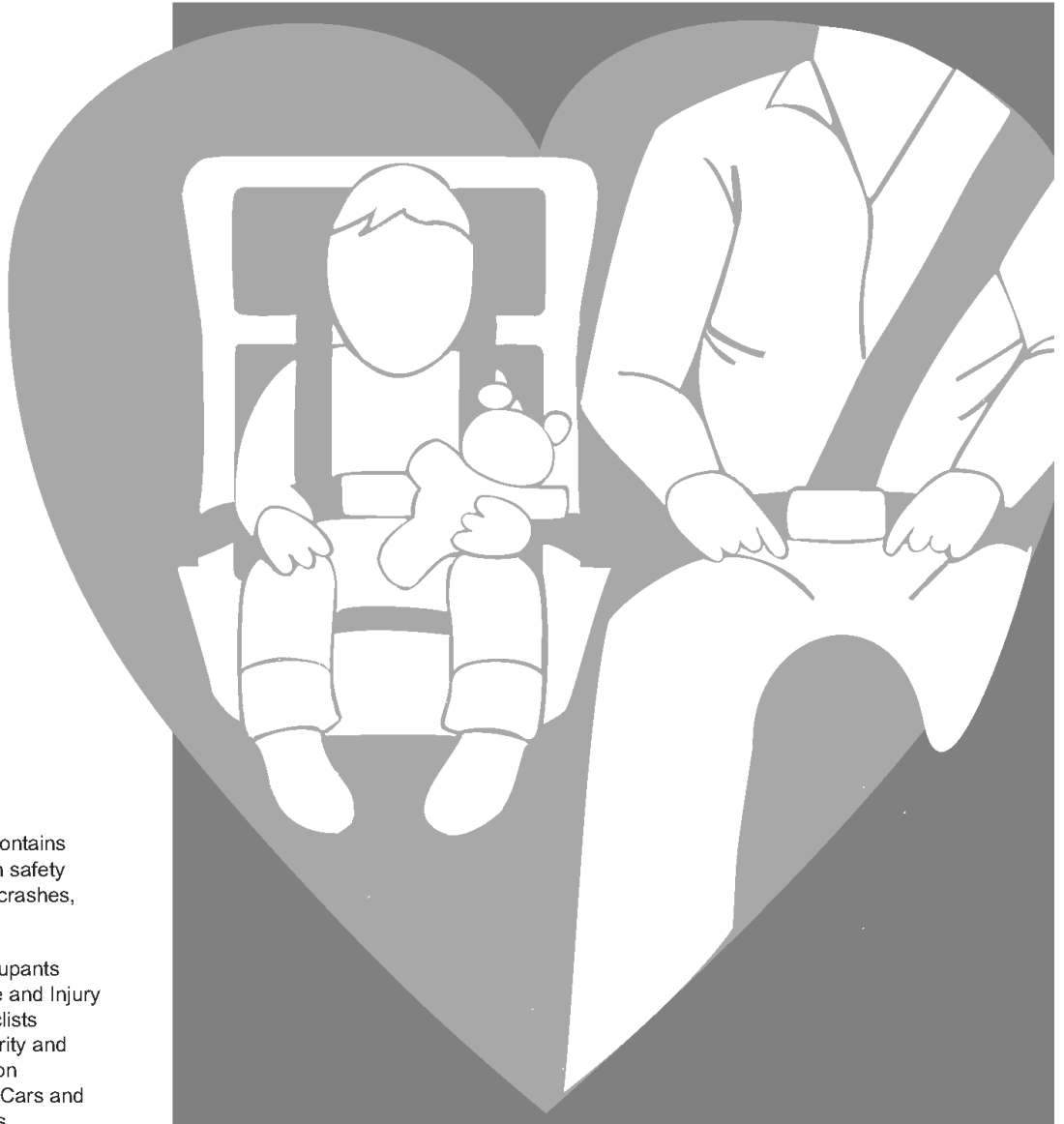


VII. SAFETY EQUIPMENT



This section contains information on safety equipment in crashes, including:

- Age of Occupants
- Helmet Use and Injury to Motorcyclists
- Injury Severity and Seat Position
- Passenger Cars and Light Trucks

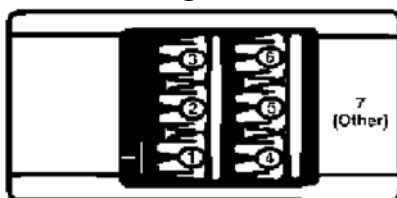
Safety Equipment Use in Passenger Cars by Injury Severity and Seat Position

	Seat Position by Safety Equipment Use														TOTAL	
	1		2		3		4		5		6		7			
Injury Severity	Yes	No	Yes	No	Yes	No	Yes	No	Yes	No	Yes	No	Yes	No	Yes	No
Not Injured	103,130	3,215	548	49	23,999	935	7,194	275	2,423	139	8,663	348	1,798	50	147,755	5,011
Incapacitating	1,442	558	7	5	349	198	46	32	14	11	48	41	8	9	1,914	854
Nonincapacitating	6,313	1,334	34	10	1,558	473	287	69	71	39	323	107	62	13	8,648	2,045
Possible	15,550	1,170	96	15	4,163	436	771	101	227	37	975	141	195	18	21,977	1,918
Killed	128	158	0	0	32	41	5	13	3	1	5	11	0	1	173	225
TOTAL	126,563	6,435	685	79	30,101	2,083	8,303	490	2,738	227	10,014	648	2,063	91	180,467	10,053

This report counts only those occupants for whom safety equipment use and seat location were recorded on the accident report form. Caution: Safety equipment use for many occupants was self-reported. Therefore, these figures may overstate actual use of safety equipment.

Yes = used safety belts or child safety seat. No = no safety equipment used.

Seating Position



Safety Equipment Use in Passenger Cars in Crashes by Age of Occupant

Age of Occupant	Shoulder & Lap Belt	Lap Belt Only	Shoulder Belt Only	Child Safety Seat	None	TOTAL
1-2	252	31	1	2,459	46	2,789
3	197	24	3	1,089	33	1,346
4	298	42	4	993	27	1,364
5-9	3,465	297	40	1,827	197	5,826
10-14	5,445	262	34	1	274	6,016
15	2,321	58	9	0	199	2,587
16	6,851	89	38	0	412	7,390
17	7,437	62	29	0	536	8,064
18	7,435	83	44	0	705	8,267
19	6,117	37	53	0	510	6,717
20	5,539	41	36	0	479	6,095
21	5,493	39	38	0	494	6,064
22	4,910	31	28	0	476	5,445
23	4,481	23	18	0	400	4,922
24	4,297	20	18	0	352	4,687
25-34	29,770	126	150	0	2,024	32,070
35-44	24,081	70	106	0	1,093	25,350
45-54	21,983	89	86	0	772	22,930
55-64	14,378	49	59	0	446	14,932
65-74	7,266	28	33	0	182	7,509
75-84	5,350	21	22	0	154	5,547
85 & over	1,535	6	6	0	52	1,599
Unknown	1,347	28	10	1,429	190	3,004
TOTAL	170,248	1,556	865	7,798	10,053	190,520

This report counts only those occupants for whom safety equipment use and seat location were recorded on the accident report form. Caution: Safety equipment use for many occupants was self-reported. Therefore, these figures may overstate actual use of safety equipment.

Safety Equipment Use in Light Trucks by Injury Severity and Seat Position

	Seat Position by Safety Equipment Use												TOTAL			
	1		2		3		4		5		6				7	
Injury Severity	Yes	No	Yes	No	Yes	No	Yes	No	Yes	No	Yes	No	Yes	No	Yes	No
Not Injured	19,059	835	275	33	3,783	201	525	25	247	19	728	25	72	3	24,689	1,141
Incapacitating	216	197	2	8	59	66	9	3	2	5	6	5	0	1	294	285
Nonincapacitating	938	312	17	16	222	77	20	8	6	9	21	18	2	1	1,226	441
Possible	1,854	252	23	14	406	77	30	7	17	4	66	6	6	0	2,402	360
Killed	18	49	0	0	5	13	0	0	0	1	1	1	0	0	24	64
TOTAL	22,085	1,645	317	71	4,475	434	584	43	272	38	822	55	80	5	28,635	2,291

This report counts only those occupants for whom safety equipment use and seat location were recorded on the accident report form. Caution: Safety equipment use for many occupants was self-reported. Therefore, these figures may overstate actual use of safety equipment.

Yes = used safety belts or child safety seat. No = no safety equipment used.

Safety Equipment Use in Light Trucks in Crashes by Age of Occupant

Age of Occupant	Shoulder & Lap Belt	Lap Belt Only	Shoulder Belt Only	Child Safety Seat	None	TOTAL
1-2	23	3	0	168	9	203
3	24	1	0	97	1	123
4	22	5	1	83	4	115
5-9	323	23	3	156	23	528
10-14	575	41	2	0	47	665
15	224	15	0	0	25	264
16	805	14	3	0	81	903
17	815	14	4	0	94	927
18	790	14	3	0	92	899
19	715	14	3	0	96	828
20	676	9	4	0	95	784
21	681	4	2	0	107	794
22	661	8	2	0	74	745
23	619	9	0	0	85	713
24	591	1	3	0	70	665
25-34	4,872	34	22	0	498	5,426
35-44	5,326	24	27	0	350	5,727
45-54	5,047	23	35	0	298	5,403
55-64	2,855	13	10	0	125	3,003
65-74	1,208	5	10	0	62	1,285
75-84	508	4	0	0	27	539
85 & over	64	2	0	0	4	70
Unknown	199	2	0	92	24	317
TOTAL	27,623	282	134	596	2,291	30,926

This report counts only those occupants for whom safety equipment use and seat location were recorded on the accident report form. Caution: Safety equipment use for many occupants was self-reported. Therefore, these figures may overstate actual use of safety equipment.

Passenger Car and Light Truck Occupants for Whom Airbag Deployed in Crash Manner of Collision by Injury Severity

Manner of Collision	Injury Severity					TOTAL
	Killed	Incapacitating	Non-incapacitating	Possible	Not Injured	
Angle	68	462	1,663	2,676	4,175	9,044
No collision w/vehicle in transit	87	546	1,539	1,367	3,581	7,120
Rear end	12	125	616	800	2,622	4,175
Head on	54	230	412	421	547	1,664
Side swipe opposite	10	53	165	170	327	725
Side swipe same	4	37	92	120	357	610
Rear to rear	0	0	2	9	25	36
Unknown	1	8	18	36	82	145
TOTAL	236	1,461	4,507	5,599	11,716	23,519

This table does not take into account whether the person was using a safety belt at the time of the crash.

Safety Equipment Use on Motorcycles by injury Severity and Seat Position

Injury Severity	Seat Position by Safety Equipment Use									
	Driver					Passenger				
	Helmet Worn	Eye Protection	None	Unknown	Total	Helmet Worn	Eye Protection	None	Unknown	Total
Not Injured	166	131	48	95	440	28	22	14	5	69
Incapacitating	214	300	138	21	673	24	39	26	7	96
Nonincapacitating	513	397	200	39	1,149	56	52	31	4	143
Possible	216	164	79	34	493	23	17	14	2	56
Killed	23	45	24	10	102	2	0	1	0	3
TOTAL	1,132	1,037	489	199	2,857	133	130	86	18	367

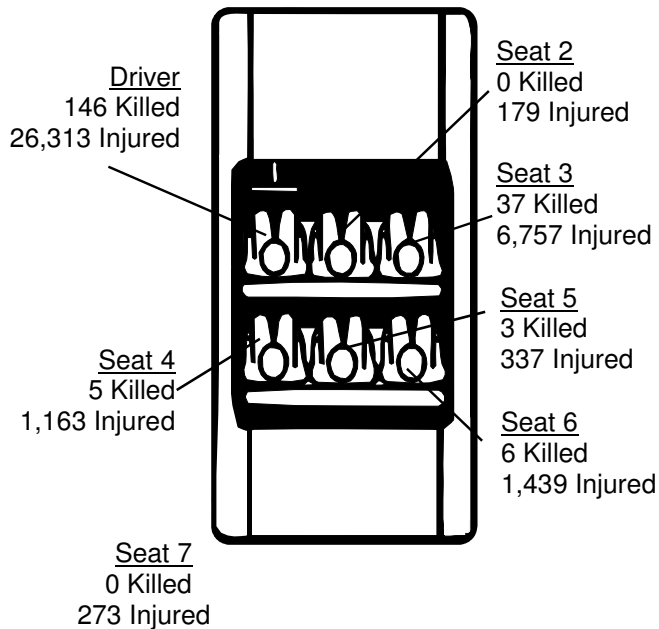
Injury Severity	Seat Position by Safety Equipment Use									
	Side Car					TOTAL				
	Helmet Worn	Eye Protection	None	Unknown	Total	Helmet Worn	Eye Protection	None	Unknown	Total
Not Injured	0	1	0	0	1	194	154	62	100	510
Incapacitating	0	0	1	0	1	238	339	165	28	770
Nonincapacitating	0	2	0	1	3	569	451	231	44	1,295
Possible	0	0	0	0	0	239	181	93	36	549
Killed	1	0	0	0	1	26	45	25	10	106
TOTAL	1	3	1	1	6	1,266	1,170	576	218	3,230

This report counts only those motorcyclists for whom seat location was recorded on the accident report form.

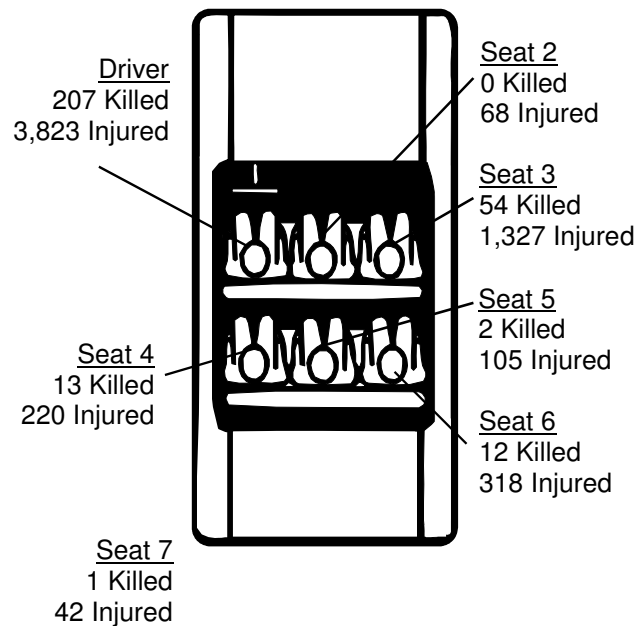
Occupants and Injury Severity by Seating Position and Safety Equipment Use

Passenger Cars and Light Trucks

With Safety Equipment



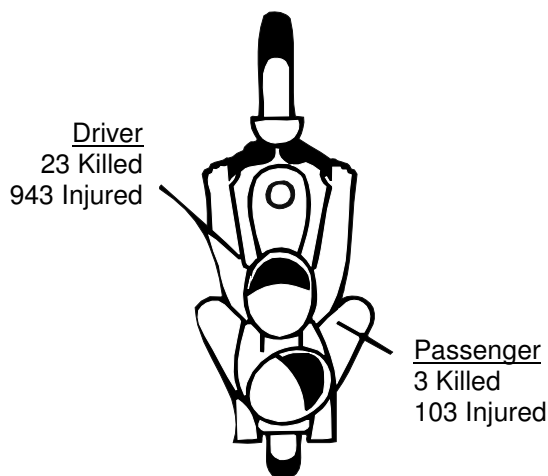
Without Safety Equipment



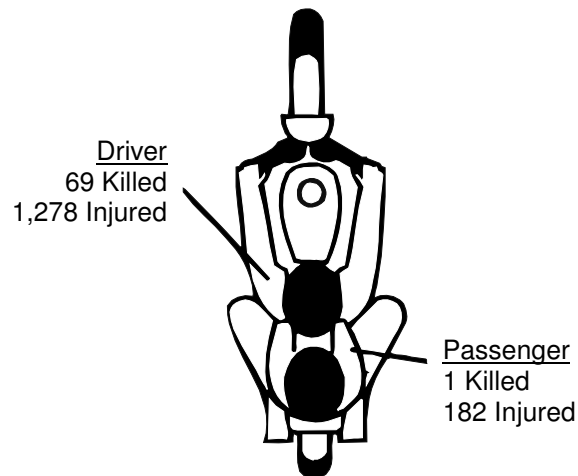
These numbers count only those occupants for whom safety equipment use and seat location were reported on the accident report form. Seat 7 includes miscellaneous seat positions such as third row seats in cars and vans. Note that use of safety equipment is often self-reported on the crash report form and may not reflect actual use.

Motorcycles

With Helmet



Without Helmet



These numbers include only those motorcyclists whose safety equipment use was reported on the crash report form. Use of safety equipment is often self-reported and may not reflect actual use. *Without Helmet* includes those cases where safety equipment was *Eye Protection Only*.